

ESTES VALLEY
LIBRARY

Computer & Technology Class

Intermediate Photo Editing with GIMP

In this class we'll learn about:

- Select and right-click to adjust one part of an image
- Get rid of an object
- Using layer masks
- Adjusting color and brightness in a duplicate layer

GIMP stands for GNU Image Manipulation Program

GIMP can be used as a free alternative to Adobe Photoshop

Downloading GIMP on Your Home Computer



GIMP is a free program.

www.gimp.org/downloads

Click on your computer's operating system:
Microsoft Windows for a PC and OS X for a Mac

Be careful **NOT** to download from www.gimpshop.com, which is a different program with advertisements.

Choose "Download GIMP 2.8.16 directly"
Next steps for installing GIMP will vary, depending on the computer.

Free GIMP Tutorials

www.gimp.org/tutorials

Opening Images Saved on Your Computer in GIMP to Start Editing

Open GIMP
File / Open / find your image / Open

Select and Right-Click to Adjust One Part of Image

Part of an image can be selected with the Ellipse Select Tool from the Toolbox

Feather edges to a radius of 90

Right-click on your selection > Colors > Color Balance

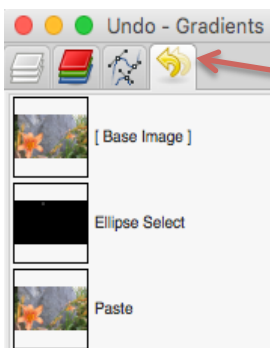
Right-click on your selection > Brightness-Contrast

Or.... Here's another way...

Fuzzy Select Tool selects an area based on color. Hold Shift on keyboard to select multiple areas.

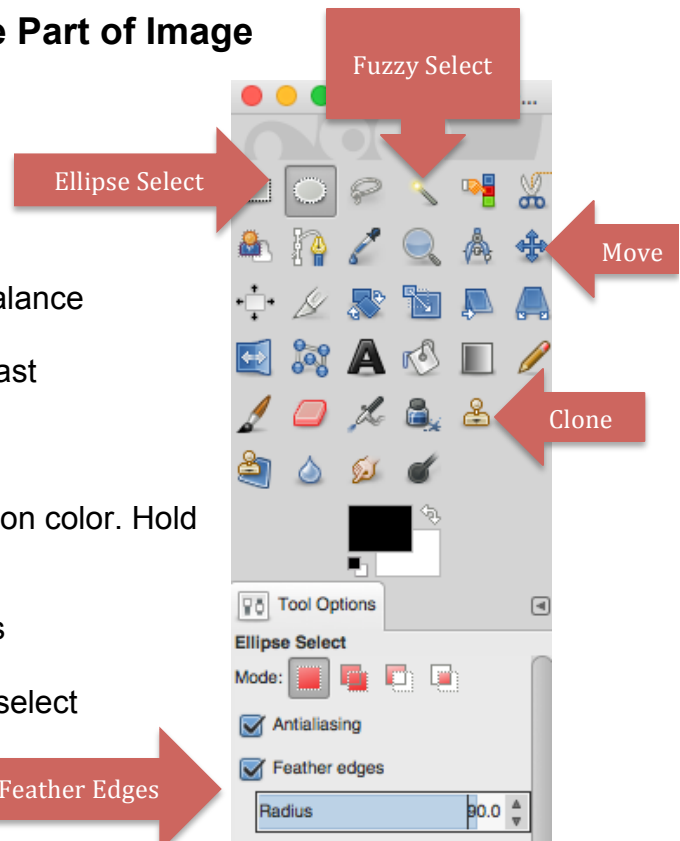
Right-click to adjust colors and brightness

Use Select menu at the top > None to unselect



If you don't like the edit, use the History Dialog to return to base image

Feather Edges



Get Rid of an Object

Select neutral background using Ellipse Select Tool

Feather edges to a radius of 20

Edit > Copy Visible. Edit > Paste.

Use Move Tool to move pasted selection to cover the unwanted object. Click anywhere else on the image to anchor the move.

Or.... Here's another way...

View > Zoom > zoom way in > Clone Tool > press command on the keyboard (press Control on a Windows PC) to select pattern > use clone tool to paint over the unwanted object

Works best with neutral backgrounds and small objects

Using Layer Masks: Revealed Flower Project

Layer masks are a more advanced way to adjust colors

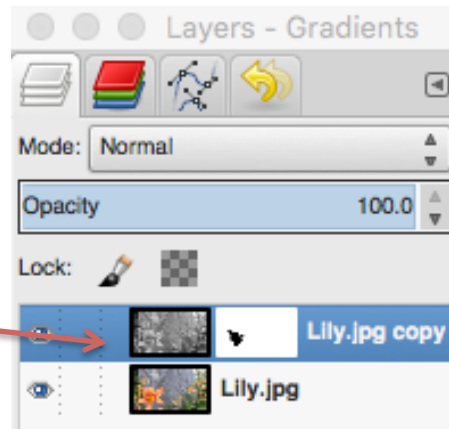
Use Layer menu at the top > Duplicate Layer

Use the Color menu at the top > Desaturate. Pick shade you like and click OK.

In Layers Dialog, right-click on the copy layer > Add Layer Mask > keep it on White (full opacity) and click Add

Paintbrush to reveal foreground object:

On Toolbox, use Paintbrush tool to paint with black to reveal color layer below of foreground object



Saving and Exporting

File / Save As – Saves your image as .xcf for future edits in GIMP

File / Export As / Select File Type (By Extension) / JPEG – Saves your image to use outside of GIMP for email, posting online, or printing.

Adjusting Colors and Brightness in a Duplicate Layer

Use Layer menu at the top > Duplicate Layer

Use the Colors menu at the top > Color Balance > adjust colors and click OK
Use the Colors menu at the top > Brightness-Contrast > adjust and click OK

In Layers Dialog, right-click on the copy layer > Add Layer Mask > keep it on White (full opacity) and click Add

Paintbrush to reveal background object:

On Toolbox, use Paintbrush tool to paint with black to reveal color layer below of background objects

If the edit is too much, lower Opacity on the Layers Dialog

